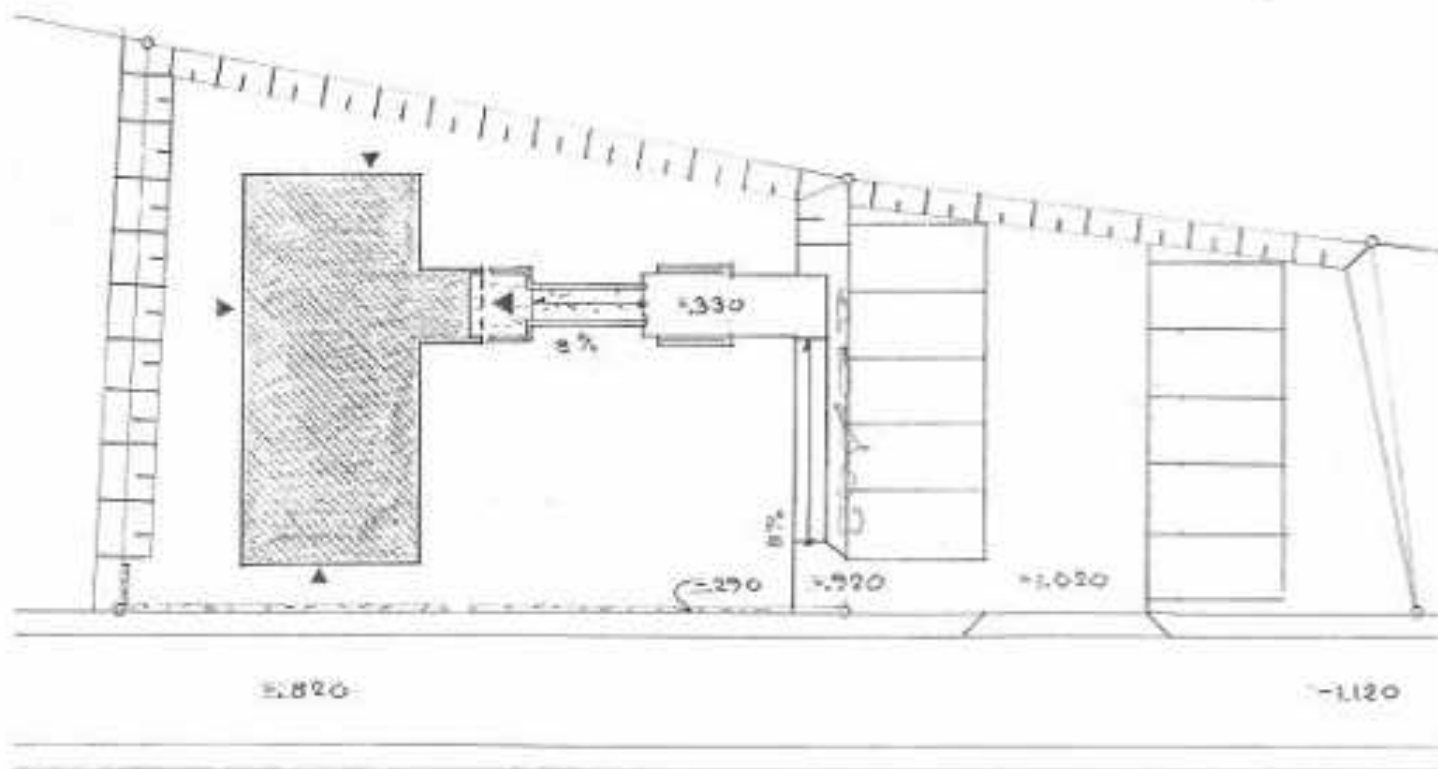


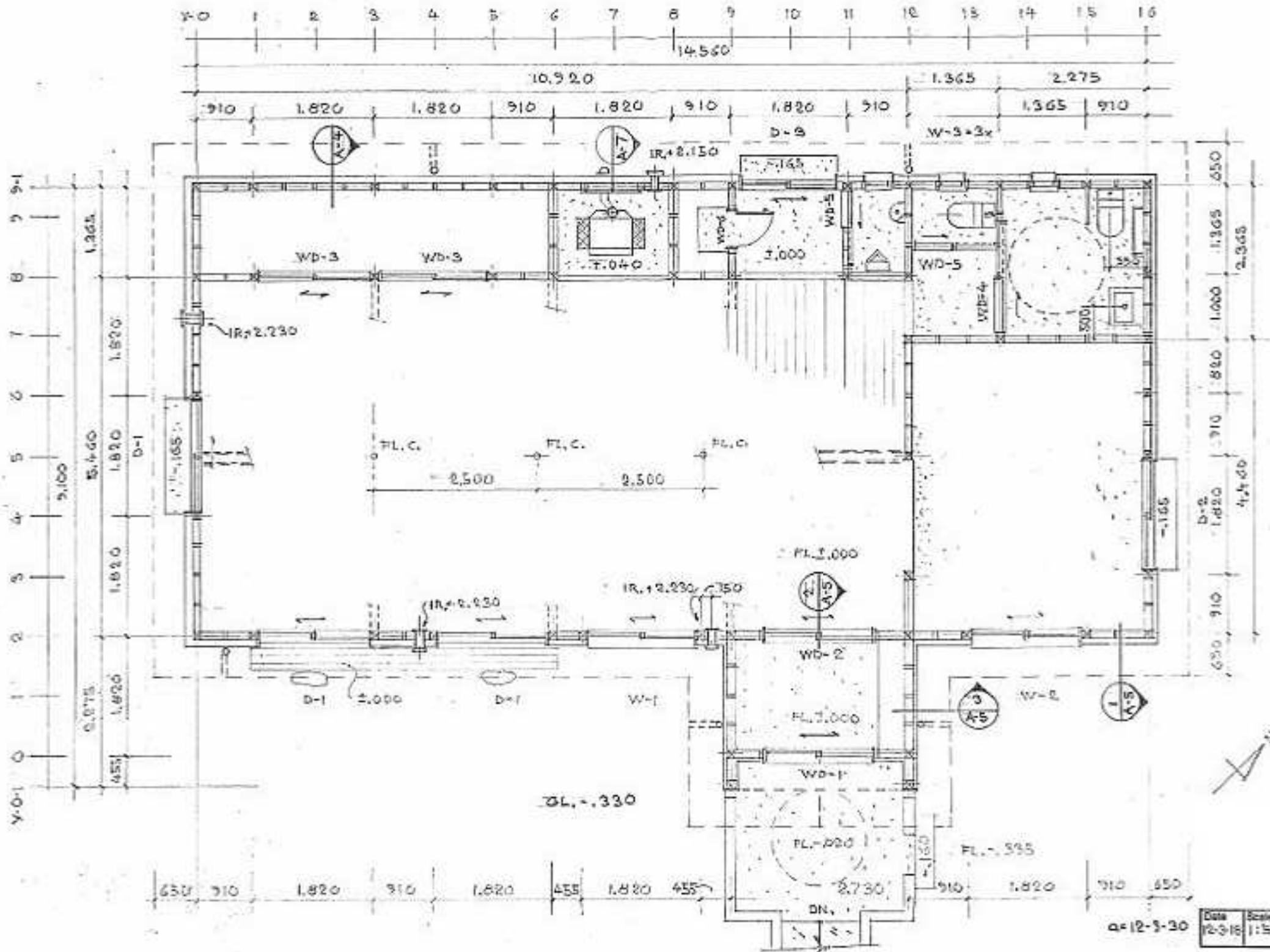
A-1	SITE PLAN	2 12-3-30
A-2	FLOOR PLAN	2 - -
A-3	ELEVATIONS	2 - -
A-4	SECTION	2 - -
A-5	SECTIONS	- - -
A-6	INTELLO	- - -
A-7	WOOD STOVE	- - -
S-1		2 12-3-30
SE-1		12-3-30
SE-2		- - -
E-1		
B-2		

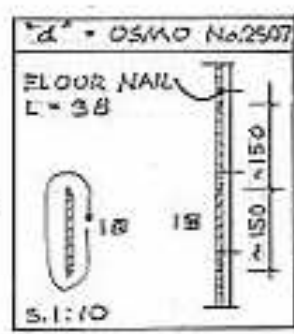
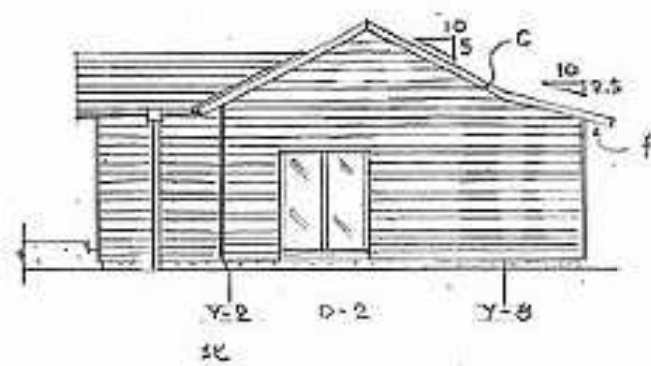
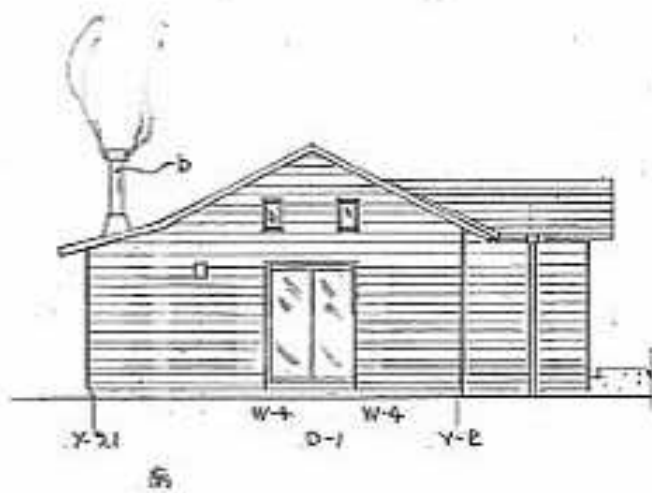


111,17 m²
= 33,6 TSU80

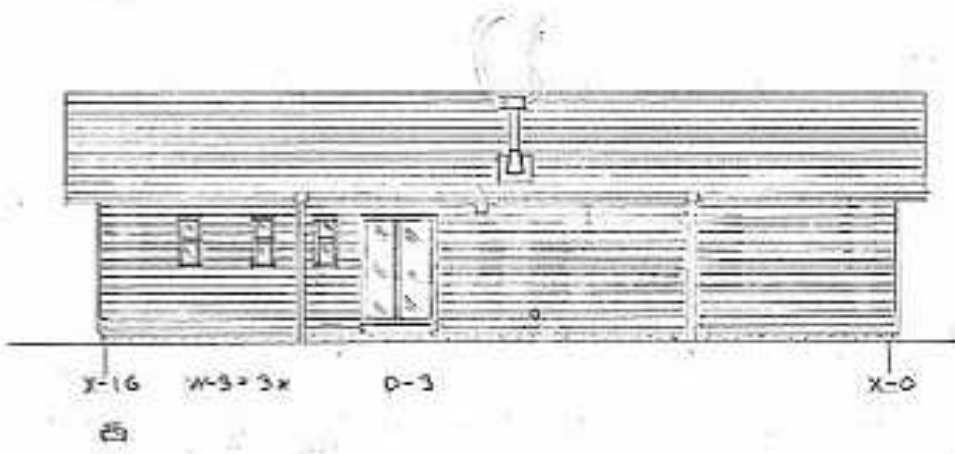
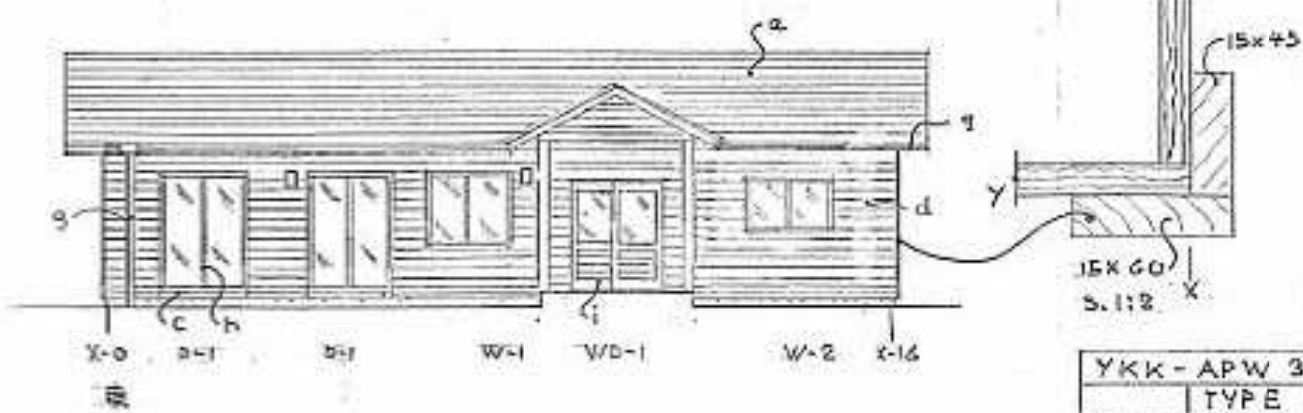
2-12-3-30

Date	Scale	No.
20-18	1:200	A-1





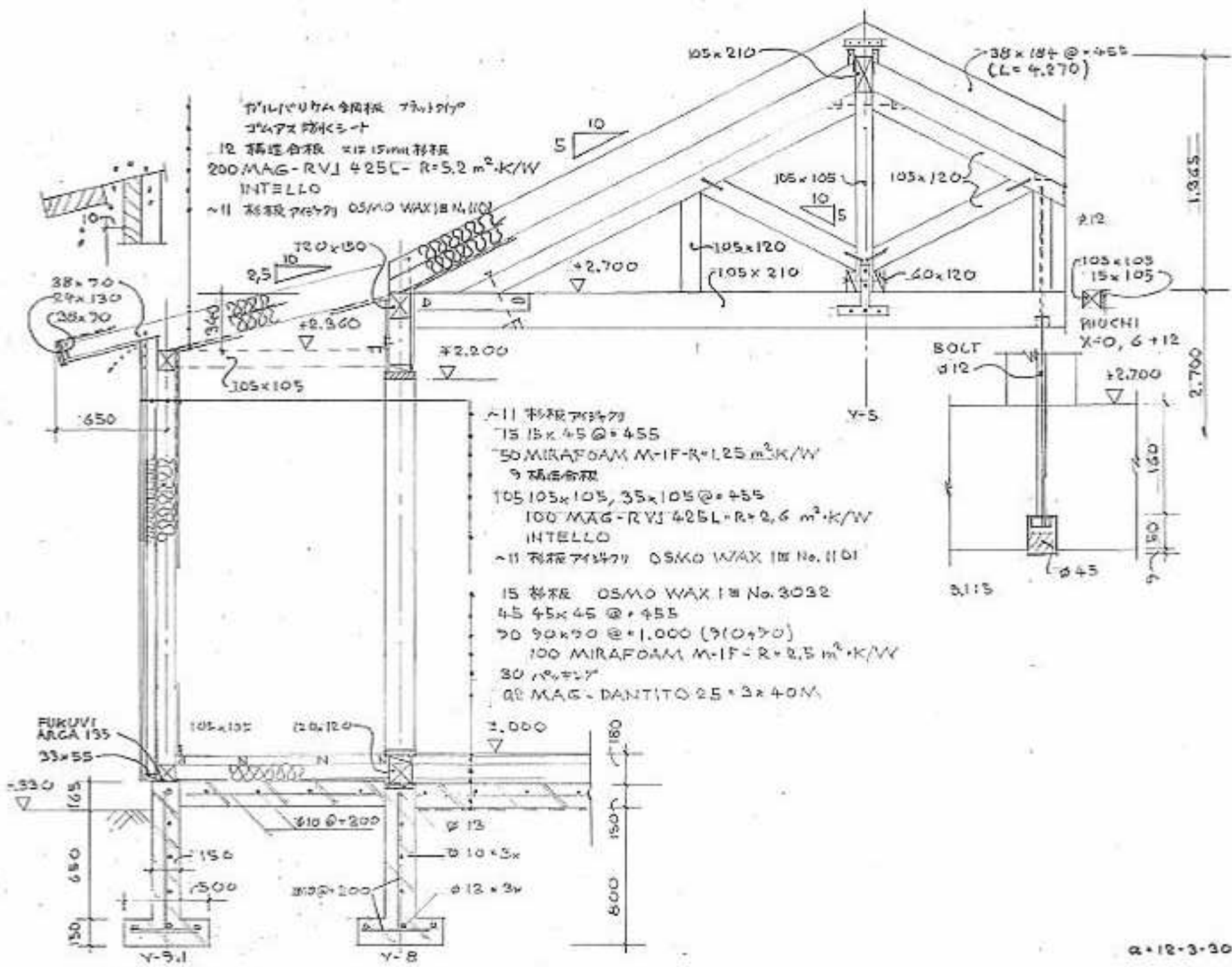
マテリアル	数量
a	ガルバリウム鋼板
b	ステンレス-ビス
c	破風板 OSMO No.2507 2回
d	杉板 OSMO No.2507 杉板 1700x75
e	杉 45x135 OSMO "C"
f	杉野地板 OSMO "C" 1回
g	両端150, 375幅のYKK APW330
h	YKK 両端付のYKK APW330
i	玄関ドア 1500x970 OSMO 中付+2500



YKK-APW 330+AMIDO, WHITE, GLASS TONEI

	TYPE	FL. ↑	No.	W × H
D-1	HIK1	0.000	SHY-16022-N	1,690 × 2,230
D-2	-	-	-16020-N	- × 2,030
D-3	-	-	-15020-N	1,540 × -
W-1	-	.860	-16013-NJ	1,690 × 1,370
W-2	-	1.030	-16009-NJ	- × 970
W-3	O.HUNG	-	SXU-03609-NSM	405 × -
W-4	FIX	2.900	SXF-03605-N	- × 570

TOTAL PRICE 930,000Y, 50% = 465,000Y



フィルバウチン鋼板 70x10x10
 フォアス 防湿シート
 12 筋違合板 2x15mm 杉板
 200 MAG-RVJ 425L-R=5.2 m²·K/W
 INTELLO
 ~11 杉板 70x10x10 OSMO WAX I# No.1101

~11 杉板 70x10x10
 15 15x45 @ +455
 50 MIRAF OAM M-IF-R=1.25 m²·K/W
 9 筋違合板
 105 105x105, 35x105 @ +455
 100 MAG-RVJ 425L-R=2.6 m²·K/W
 INTELLO
 ~11 杉板 70x10x10 OSMO WAX I# No.1101
 15 杉板 OSMO WAX I# No.3032
 45 45x45 @ +455
 90 90x90 @ +1,000 (9(0+90))
 100 MIRAF OAM M-IF-R=2.5 m²·K/W
 30 杉板 70x10x10
 90 MAG-DANTITO 2.5x3x40M